



## Bunny Box Tutorial



What you will need:

### Tools:

- Top Note die
- Oval punch:
  - Small & large
- Circle Punch:
  - 1",  $\frac{3}{4}$ ",  $\frac{1}{2}$ "
- Owl Punch (small circles)
- Small Heart Punch

### Paper:

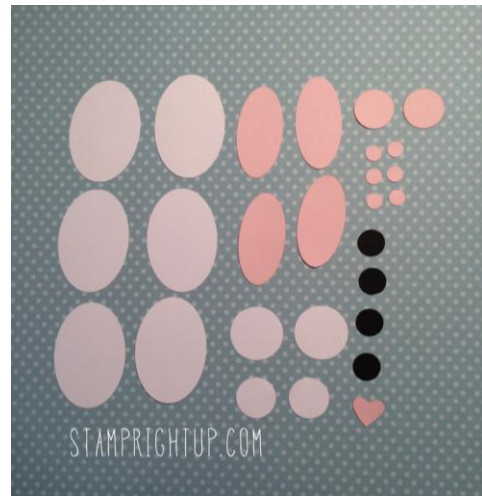
- Whisper White or Smoky Slate
- Pink Pirouette
- Basic Black



Instructions:

To create bunny (front of box)

1. Die cut one top note from the desired color
2. Punch out the following shapes:
  - a. 6 x \*white large oval
  - b. 4 x pink small oval
  - c. 2 x 1" \*white circle
  - d. 2 x 3/4" pink circle  
2 x 3/4" white circle
  - e. 2 x 1/2" black circle
  - f. 1 x small pink heart
  - g. 6 x pink circle from Owl punch



3. Sponge the edges of all your colored pieces with the same color  
\* Tip: To sponge the edge of the tiny circles for the bunny toes, stick them to your roll of glue dots it will make it much easier to hold on to them\*



4. Adhere the ears together and set them aside (see images)



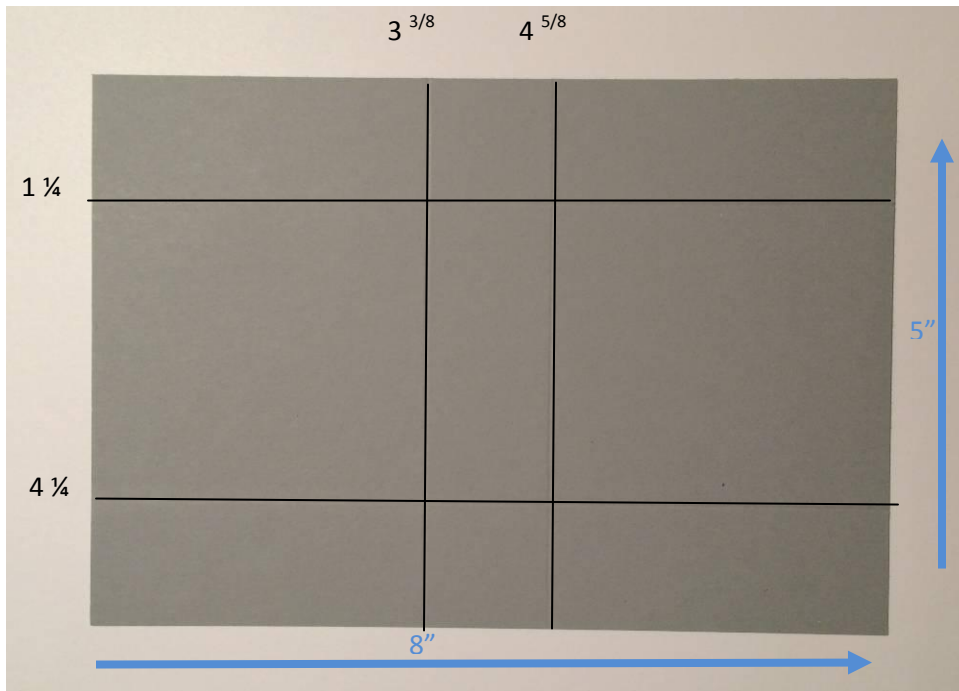
5. Adhere feet together and set them aside
6. Assemble bunny together as shown and set it aside



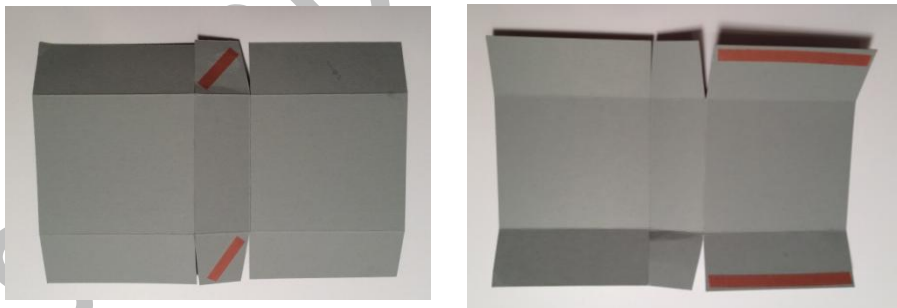


To create box:

1. Cut a piece of card stock 8" x 5"
2. Score at:
  - a. 8" side score at :  $3 \frac{3}{8}$  and  $4 \frac{5}{8}$
  - b. 5" side score at:  $1 \frac{1}{4}$  and  $4 \frac{1}{4}$

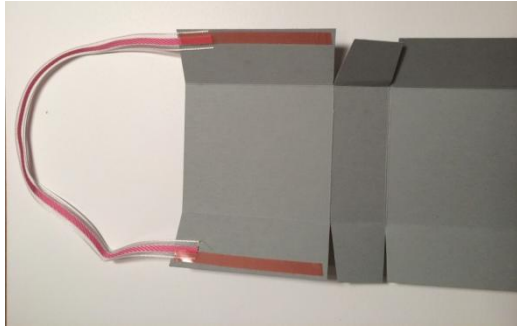


3. Cut tabs & apply sticky strip along panels as shown





4. Expose a small area of sticky strip and stick ribbon down



5. Remove sticky strip backing & assemble box

You should now have your box with a ribbon handle, and your bunny face ready to adhere together – adhere them together using sticky strip here as well to ensure that the pieces are strongly bonded together.

StampRightUp.com